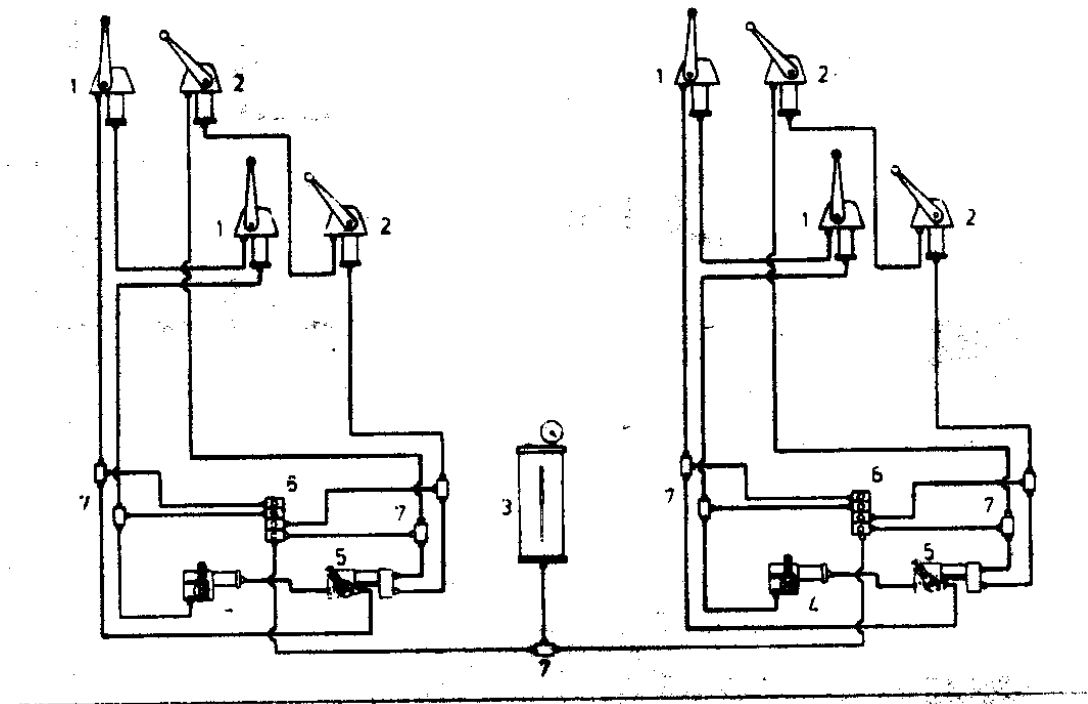




OPERATION – MAINTENANCE OF VETUS HUDRAULIC REMOTE CONTROLS FOR TWO ENGINES

A system of VETUS Hydraulic Remote Controls – for two engines- looks as follows:



General Maintenance Rules

- (1) Maintaining the Pressure at 5.6 BAR
- (2) The level of fluid should be at $\frac{3}{4}$ of the Pressurised Expansion Tank
- (3) Always use VETUS HYDRAULIC FLUID FOR REMOTE CONTROLS and not other fluids.

NOTE: If the rules above are followed stringently, then there is no need to ventilate the Remote Controls

VENTILATION PROCEDURE

OBSERVATION

When the level of the fluid in the Pressurised Expansion Tank goes below the tank-crystal's marking - i.e to 1/4- then the ventilation process should be performed.

PROCEDURE

- (1) Check whether there is a leakage in the system. If yes, then check the hose connections of the hydraulic remote controls and their joints.
- (2) Perform a ventilation, by following the under mentioned steps:
 - (a) Place the remote controls of the main deck at their maximum position(full) either forward or backward- there is no significance between the choice of forward or backward movement.
 - (b) Fill the Pressurised Expansion Tank with fluid at the maximum point(full) and pump air 6.5 BAR through a bicycle pressure pump.
 - (c) Open up the two ventilation valves in the pistons (points 4 & 5 as it is depicted in the diagram above) until clean fluid comes out without bubbles i.e until proper ventilation has been performed.
 - (d) Check again the level of fluid in the Pressurised Expansion Tank and if needed fill with more fluid up to the maximum position(full) of the Pressurised Expansion Tank and pump air up to 6.5 BAR.
 - (e) Go to the remote controls of the flying bridge (points 1 & 2 as it is shown in the middle of the diagram above) and open up the ventilation valves until clean fluid comes out.
 - (f) Later go to the remote controls of the flying bridge (points 1 & 2 in the upper part, as it is shown in the diagram above) and open up the ventilation valves until clean fluid comes out- exactly as in step (e)
 - (g) At this point do move the remote controls of the flying bridge forward and backward slowly but steadily FIVE(5) times for synchronizing the remote controls of the Main Deck and the Flying Bridge.